

Public Notice of Application for Consent

Clause 53(5) (a) of the Planning Act

The East Nipissing Planning Board has received the following consent application:

Application No: 2022-17

Applicant: Robert Bush

Agent:

Subject Lands: 1458 Hwy 630 Concession 3 Pt Lot 15 Part 1 Municipality of Calvin

Purpose: To create one residential lot of approximately 2 acres

See Sketch Attached

Other Applications

Inquires and written submission about the application can be made to JoAnne Montreuil, Secretary of the East Nipissing Planning Board, PO Box 31, Mattawa ON P0H 1V0 Telephone (705) 825-2523 or, by email: admin@enpb.ca

The meeting to hear this application will be on **September 28, 2022 at 7 pm, at the Municipality of Mattawan Hall located at 947 Hwy 533, Mattawa ON.**

Need to Make Submissions:

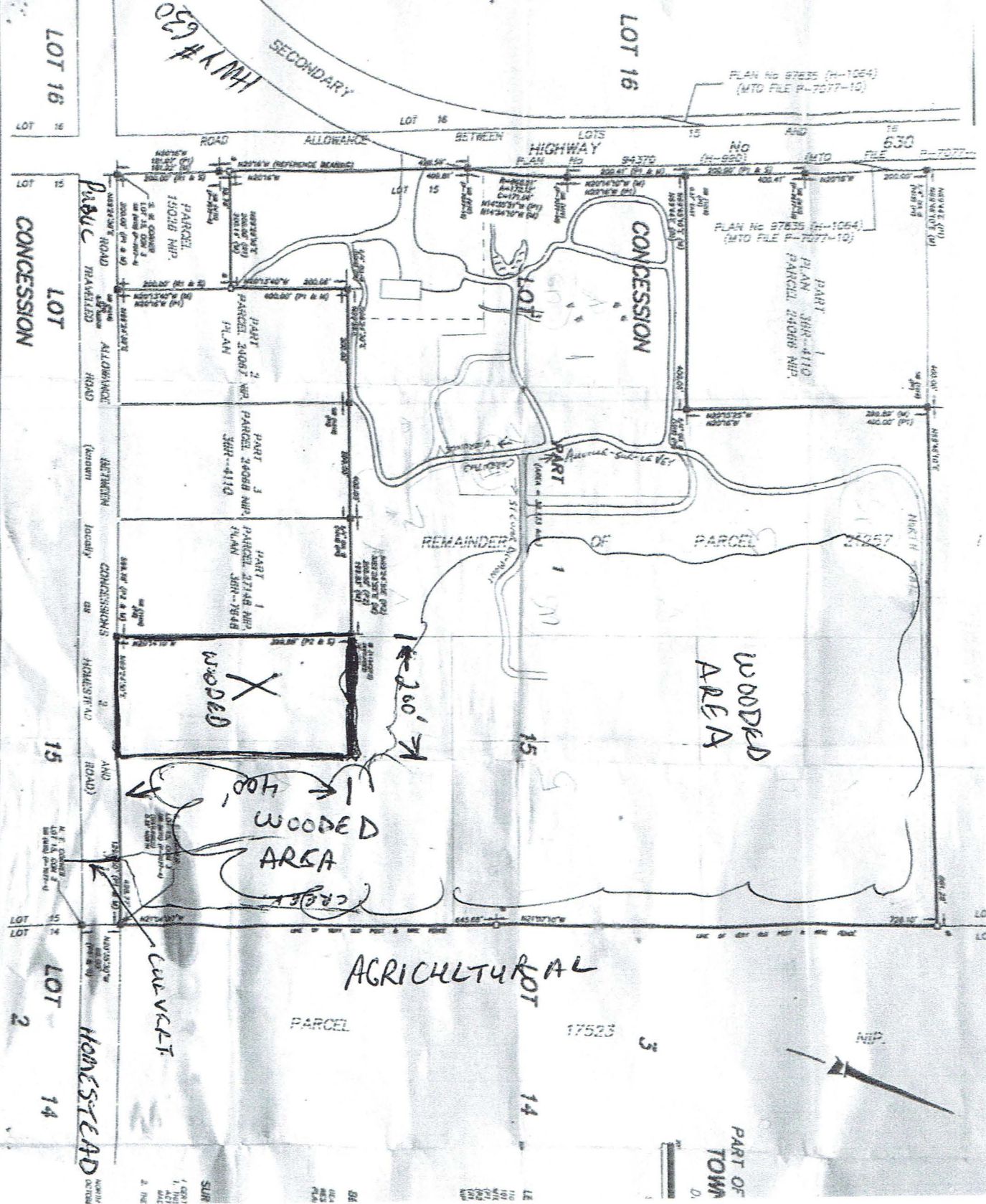
If a person or public body that files an appeal of the decision to the East Nipissing Planning Board, in respect of the proposed consent does not make written submissions to the Board, before the Board give or refuses to give a provisional consent, the Local Planning Appeal Tribunal may dismiss the appeal.

Requesting Notice of Decision:

Any person or public body may appeal a decision of the East Nipissing Planning Board, not later than 20 days after the notice of decision is given. If you wish to be notified of the decision of the Board, in respect to the propose consent, you must make written request to the Board at the address shown below.

Getting Additional Information:

Additional information about the application is available by contacting the numbers listed above.



039 #1 MH

LOT 16

PLAN NO 87335 (H-1064)
(MTO FILE P-7077-10)

LOT 16

SECONDARY ROAD

HIGHWAY

630

LOT 15

CONCESSION

LOT 15

PUBLIC ROAD TRAVELLED

ALLOWANCE ROAD

BETWEEN LOCALITY CONCESSIONS OR HOUSING ROAD

AND

CONCESSION

CONCESSION

CONCESSION

CONCESSION

CONCESSION

CONCESSION

CONCESSION

CONCESSION

CONCESSION

CONCESSION

CONCESSION

CONCESSION

CONCESSION

CONCESSION

CONCESSION

CONCESSION

CONCESSION

CONCESSION

LOT 15

CONCESSION

CONCESSION

CONCESSION

CONCESSION

CONCESSION

CONCESSION

CONCESSION

CONCESSION

CONCESSION

CONCESSION

CONCESSION

CONCESSION

CONCESSION

CONCESSION

CONCESSION

CONCESSION

CONCESSION

CONCESSION

CONCESSION

CONCESSION

CONCESSION

CONCESSION

CONCESSION

LOT 14

CONCESSION

CONCESSION

CONCESSION

CONCESSION

CONCESSION

CONCESSION

CONCESSION

CONCESSION

CONCESSION

CONCESSION

CONCESSION

CONCESSION

CONCESSION

CONCESSION

CONCESSION

CONCESSION

CONCESSION

CONCESSION

CONCESSION

CONCESSION

CONCESSION

CONCESSION

CONCESSION

LOT 14

CONCESSION

CONCESSION

CONCESSION

CONCESSION

CONCESSION

CONCESSION

CONCESSION

CONCESSION

CONCESSION

CONCESSION

CONCESSION

CONCESSION

CONCESSION

CONCESSION

CONCESSION

CONCESSION

CONCESSION

CONCESSION

CONCESSION

CONCESSION

CONCESSION

CONCESSION

CONCESSION

LOT 14

CONCESSION

CONCESSION

CONCESSION

CONCESSION

CONCESSION

CONCESSION

CONCESSION

CONCESSION

CONCESSION

CONCESSION

CONCESSION

CONCESSION

CONCESSION

CONCESSION

CONCESSION

CONCESSION

CONCESSION

CONCESSION

CONCESSION

CONCESSION

CONCESSION

CONCESSION

CONCESSION

WOODED

WOODED AREA

AGRICULTURAL

WOODED AREA

CULVERT

PARCEL

17523

PART OF TOWN

NIP



SLUR	1. CON	2. THE
1. CON	1. THE	ALL
2. THE		